



→ m	11.1 m*	11.1 m	14.8 m	18.5 m	22.1 m	25.8 m	29.5 m	33.2 m	36.9 m	40.5 m	44.2 m	47.9 m	51.2 m
2.3	100.0**												
2.5	90.0**												
3.0	81.6**	76.1**	65.0	65.0									
3.5	74.6	69.9	65.0	65.0	50.0								
4.0	68.3	64.1	63.5	61.4	50.0	41.3							
4.5	62.7	59.0	58.5	56.7	50.0	41.3							
5.0	57.8	54.6	54.0	52.7	50.0	39.2	31.6						
6.0	50.0	47.2	46.6	46.8	45.9	34.9	31.6	23.8					
7.0	42.5	41.2	40.7	40.8	40.8	33.0	28.9	23.8	19.7	15.8			
8.0	36.6	35.5	35.4	35.5	35.8	31.1	28.5	23.8	19.7	15.8	12.9		
9.0	24.9	24.0	31.2	31.4	31.6	29.4	28.5	22.6	19.7	15.8	12.9	10.2	
10.0			26.7	26.9	27.3	28.0	27.0	20.9	19.6	15.8	12.9	10.2	8.9
11.0			22.7	23.4	24.7	24.9	24.0	19.4	18.2	15.8	12.9	10.2	8.9
12.0			20.0	21.9	21.9	21.7	21.3	18.0	17.0	15.8	12.9	10.2	8.9
14.0				17.2	17.3	17.0	16.6	16.2	14.9	14.1	12.9	10.2	8.9
16.0				14.0	14.1	13.8	13.4	13.9	13.0	12.6	11.8	10.2	8.9
18.0					11.7	11.5	11.1	11.5	11.7	10.8	10.8	10.0	8.9
20.0					9.2	9.7	9.3	9.7	9.9	9.5	9.5	9.1	8.5
22.0						8.3	8.4	8.3	8.5	8.6	8.4	8.1	7.6
24.0							7.8	7.2	7.7	7.4	7.3	7.0	6.9
26.0								6.9	6.5	6.7	6.5	6.3	6.0
28.0									6.0	5.9	5.7	5.5	5.2
30.0									5.3	5.2	5.0	4.8	4.5
32.0										4.7	4.4	4.3	3.9
34.0										4.2	3.9	3.7	3.4
36.0											3.5	3.3	3.0
38.0											3.1	2.9	2.6
40.0												2.6	2.2
42.0												2.3	1.9
44.0													1.7
46.0													1.4
48.0													1.2



→ m	11.1 m*	11.1 m	14.8 m	18.5 m	22.1 m	25.8 m	29.5 m	33.2 m	36.9 m	40.5 m	44.2 m	47.9 m	51.2 m
2.3	100.0**												
2.5	90.0**												
3.0	81.6**	76.6**	65.0	65.0									
3.5	74.5	69.7	65.0	65.0	50.0								
4.0	67.9	63.8	63.3	61.4	50.0	41.3							
4.5	62.3	58.7	58.2	56.7	50.0	41.3							
5.0	57.5	54.2	53.7	52.7	50.0	39.2	31.6						
6.0	49.1	46.8	46.3	46.4	45.9	34.9	31.6	23.8					
7.0	41.5	40.5	40.0	40.1	39.4	33.0	28.9	23.8	19.7	15.8			
8.0	35.8	35.3	34.8	34.1	32.9	31.1	28.5	23.8	19.7	15.8	12.9		
9.0	24.9	24.0	29.1	28.9	28.1	28.7	27.0	22.6	19.7	15.8	12.9	10.2	
10.0			24.1	24.7	26.3	25.1	23.7	20.9	19.6	15.8	12.9	10.2	8.9
11.0			20.9	22.9	22.9	22.2	21.0	19.4	18.2	15.8	12.9	10.2	8.9
12.0			19.4	19.9	20.0	19.7	18.7	17.8	17.0	15.8	12.9	10.2	8.9
14.0				15.6	15.7	15.4	15.0	15.3	14.0	13.7	12.9	10.2	8.9
16.0				12.7	12.7	12.5	12.1	12.5	12.8	11.4	11.4	10.2	8.9
18.0					11.0	10.3	10.1	10.4	10.6	10.3	10.3	9.8	8.9
20.0					9.4	8.9	9.2	8.7	9.1	9.0	8.9	8.4	8.2
22.0						8.0	8.1	7.7	7.9	7.7	7.5	7.2	7.2
24.0							7.1	6.9	6.9	6.6	6.5	6.1	6.1
26.0								6.2	6.0	6.0	5.7	5.6	5.3
28.0									5.3	5.2	5.0	4.8	4.5
30.0									4.7	4.6	4.4	4.2	3.9
32.0										4.1	3.8	3.7	3.4
34.0											3.6	3.4	2.9
36.0												2.9	2.5
38.0												2.6	2.1
40.0													2.1
42.0												1.8	1.5
44.0													1.2
46.0													1.0
48.0													0.8

\* Over rear · Nach hinten · A l'arrière · Hacia atrás · Indietro · Назад

\*\* With additional lifting equipment · Mit Zusatzhubausrüstung · Avec équipement de levage supplémentaire

Con equipamiento de elevación adicional · Con attrezzaggio di sollevamento supplementare · С дополнительным подъемным оборудованием

Operation · Einsatz · Utilisation  
 Uso · Эксплуатация




m	11.1 m*	11.1 m	14.8 m	18.5 m	22.1 m	25.8 m	29.5 m	33.2 m	36.9 m	40.5 m	44.2 m	47.9 m	51.2 m
2.3	100.0**												
2.5	90.0**												
3.0	81.6**	76.3**	65.0	65.0									
3.5	74.0	69.4	65.0	65.0	50.0								
4.0	67.5	63.5	63.0	61.4	50.0	41.3							
4.5	61.9	58.3	57.8	56.7	50.0	41.3							
5.0	57.1	53.8	53.3	52.7	50.0	39.2	31.6						
6.0	47.9	46.4	45.9	46.0	45.9	34.9	31.6	23.8					
7.0	40.4	39.7	39.2	39.3	38.5	33.0	28.9	23.8	19.7	15.8			
8.0	34.5	34.6	33.6	33.3	32.0	31.1	28.5	23.8	19.7	15.8	12.9		
9.0	24.9	24.0	27.1	27.3	28.1	28.0	26.4	22.6	19.7	15.8	12.9	10.2	
10.0			22.4	24.7	25.0	24.4	23.1	20.9	19.6	15.8	12.9	10.2	8.9
11.0			20.8	21.4	21.4	21.2	20.4	19.2	18.2	15.8	12.9	10.2	8.9
12.0			18.1	18.6	18.6	18.4	18.0	17.8	16.6	15.8	12.9	10.2	8.9
14.0				14.5	14.6	14.3	13.9	14.4	14.0	13.3	12.9	10.2	8.9
16.0				11.7	11.9	11.5	11.2	11.6	11.8	11.1	11.0	10.2	8.9
18.0					10.2	9.7	10.1	9.5	9.9	9.8	9.7	9.4	8.9
20.0					8.6	8.6	8.7	8.4	8.5	8.3	8.1	7.8	7.8
22.0						7.4	7.5	7.3	7.3	7.0	6.9	6.6	6.5
24.0							6.5	6.3	6.3	6.0	5.9	5.5	5.5
26.0							5.7	5.5	5.4	5.2	5.0	4.7	4.7
28.0								4.8	4.7	4.4	4.3	4.0	4.0
30.0								4.2	4.1	3.8	3.7	3.4	3.4
32.0									3.6	3.3	3.2	2.9	2.8
34.0									3.2	2.9	2.7	2.4	2.4
36.0										2.5	2.3	2.0	2.0
38.0										2.2	2.0	1.7	1.7
40.0											1.7	1.4	1.4
42.0											1.4	1.1	1.1
44.0												0.9	0.8
46.0													0.6




m	11.1 m*	11.1 m	14.8 m	18.5 m	22.1 m	25.8 m	29.5 m	33.2 m	36.9 m	40.5 m	44.2 m	47.9 m	51.2 m
2.3	100.0**												
2.5	90.0**												
3.0	81.5**	76.1**	65.0	65.0									
3.5	73.6	69.1	65.0	65.0	50.0								
4.0	67.1	63.2	62.7	61.4	50.0	41.3							
4.5	61.6	58.0	57.5	56.7	50.0	41.3							
5.0	56.8	53.5	53.0	52.6	50.0	39.2	31.6						
6.0	46.7	45.6	45.1	45.2	44.0	34.9	31.6	23.8					
7.0	39.4	39.0	38.5	37.1	35.5	33.0	28.9	23.8	19.7	15.8			
8.0	31.7	31.8	30.8	30.6	29.8	30.0	28.2	23.8	19.7	15.8	12.9		
9.0	24.9	24.0	24.7	26.2	27.2	25.8	24.3	22.6	19.7	15.8	12.9	10.2	
10.0			22.0	23.0	23.0	22.5	21.2	19.9	19.2	15.8	12.9	10.2	8.9
11.0			19.1	19.6	19.7	19.4	18.7	18.6	17.0	15.8	12.9	10.2	8.9
12.0			16.5	17.0	17.1	16.8	16.4	16.7	15.4	14.9	12.9	10.2	8.9
14.0				13.3	13.3	13.1	12.7	13.2	13.4	12.2	12.0	10.2	8.9
16.0				10.7	11.2	10.8	11.2	10.5	10.9	10.8	10.7	10.1	8.9
18.0					9.3	9.3	9.4	9.2	9.2	8.9	8.8	8.4	8.3
20.0					7.8	7.8	7.9	7.7	7.7	7.4	7.3	6.9	6.9
22.0						6.6	6.7	6.5	6.5	6.2	6.1	5.8	5.7
24.0							5.7	5.6	5.5	5.3	5.1	4.8	4.8
26.0							5.0	4.8	4.7	4.5	4.3	4.0	4.0
28.0								4.2	4.1	3.8	3.7	3.4	3.3
30.0								3.6	3.5	3.3	3.1	2.8	2.8
32.0									3.1	2.8	2.6	2.3	2.3
34.0									2.7	2.4	2.2	1.9	1.9
36.0										2.0	1.9	1.5	1.5
38.0										1.7	1.5	1.2	1.2
40.0											1.3	0.9	0.9
42.0											1.0	0.7	0.7
44.0												0.5	0.5

\* Over rear · Nach hinten · A l'arrière · Hacia atrás · Indietro · Hazað  
 \*\* With additional lifting equipment · Mit Zusatzhubausrüstung · Avec équipement de levage supplémentaire  
 Con equipamiento de elevación adicional · Con attrezzaggio di sollevamento supplementare · С дополнительным подъемным оборудованием



 m	11.1 m*	11.1 m	14.8 m	18.5 m	22.1 m	25.8 m	29.5 m	33.2 m	36.9 m	40.5 m	44.2 m	47.9 m	51.2 m
2.3	100.0**												
2.5	90.0**												
3.0	81.2**	75.9**	65.0	65.0									
3.5	73.4	69.0	65.0	65.0	50.0								
4.0	66.9	62.9	62.5	61.4	50.0	41.3							
4.5	61.4	57.8	57.3	56.7	50.0	41.3							
5.0	56.2	53.3	52.8	52.4	50.0	39.2	31.6						
6.0	46.1	45.1	44.6	44.4	42.0	34.9	31.6	23.8					
7.0	38.9	38.7	37.6	35.4	33.8	33.0	28.9	23.8	19.7	15.8			
8.0	30.2	30.2	29.2	29.1	29.8	28.7	26.9	23.8	19.7	15.8	12.9		
9.0	24.4	24.0	23.5	26.2	26.0	24.6	23.2	21.7	19.7	15.8	12.9	10.2	
10.0			21.3	21.9	21.9	21.5	20.2	19.7	18.3	15.8	12.9	10.2	8.9
11.0			18.1	18.7	18.7	18.5	17.8	17.7	16.1	15.8	12.9	10.2	8.9
12.0			15.7	16.2	16.2	16.0	15.6	15.9	15.4	14.1	12.9	10.2	8.9
14.0				12.6	13.1	12.4	12.5	12.5	12.7	12.2	11.3	10.2	8.9
16.0				10.1	10.6	10.6	10.7	10.3	10.5	10.3	10.1	9.5	8.9
18.0					8.7	8.7	8.8	8.7	8.7	8.4	8.2	7.9	7.8
20.0					7.3	7.3	7.4	7.2	7.2	6.9	6.8	6.4	6.4
22.0						6.2	6.2	6.1	6.0	5.8	5.6	5.3	5.3
24.0							5.3	5.2	5.1	4.8	4.7	4.4	4.4
26.0							4.6	4.4	4.4	4.1	3.9	3.6	3.6
28.0								3.8	3.7	3.5	3.3	3.0	3.0
30.0								3.3	3.2	2.9	2.8	2.5	2.5
32.0									2.8	2.5	2.3	2.0	2.0
34.0									2.4	2.1	1.9	1.6	1.6
36.0										1.8	1.6	1.3	1.3
38.0										1.5	1.3	1.0	1.0
40.0											1.0	0.7	0.7
42.0											0.8	0.5	0.5



 m	11.1 m*	11.1 m	14.8 m	18.5 m	22.1 m	25.8 m	29.5 m	33.2 m	36.9 m	40.5 m	44.2 m	47.9 m	51.2 m
2.3	100.0**												
2.5	90.0**												
3.0	81.0**	75.7**	65.0	65.0									
3.5	73.2	68.8	65.0	65.0	50.0								
4.0	66.7	62.7	62.3	61.4	50.0	41.3							
4.5	61.2	57.6	57.1	56.7	50.0	41.3							
5.0	55.5	53.1	52.6	52.2	50.0	39.2	31.6						
6.0	45.5	44.7	44.2	42.3	40.0	34.9	31.6	23.8					
7.0	37.0	37.1	35.7	33.6	32.2	32.5	28.9	23.8	19.7	15.8			
8.0	28.7	28.7	27.7	27.9	29.0	27.3	25.6	23.8	19.7	15.8	12.9		
9.0	23.1	23.1	23.4	24.9	24.8	23.4	22.0	20.8	19.7	15.8	12.9	10.2	
10.0			20.2	20.8	20.8	20.4	19.2	19.0	17.3	15.8	12.9	10.2	8.9
11.0			17.2	17.7	17.8	17.5	16.9	16.8	16.1	14.9	12.9	10.2	8.9
12.0			14.8	15.3	15.4	15.1	14.7	15.0	14.8	13.3	12.9	10.2	8.9
14.0				11.9	12.4	12.0	12.5	11.7	12.0	11.9	11.0	10.2	8.9
16.0				9.5	10.0	10.0	10.1	10.0	9.9	9.6	9.4	8.8	8.6
18.0					8.1	8.2	8.3	8.1	8.1	7.8	7.6	7.3	7.2
20.0					6.8	6.8	6.9	6.7	6.7	6.4	6.3	5.9	5.9
22.0						5.7	5.8	5.6	5.6	5.3	5.2	4.8	4.8
24.0							4.9	4.8	4.7	4.4	4.3	4.0	4.0
26.0							4.2	4.0	4.0	3.7	3.6	3.3	3.2
28.0								3.5	3.4	3.1	3.0	2.7	2.6
30.0								3.0	2.9	2.6	2.5	2.2	2.1
32.0									2.5	2.2	2.0	1.7	1.7
34.0									2.1	1.8	1.7	1.4	1.3
36.0										1.5	1.3	1.0	1.0
38.0										1.2	1.1	0.7	0.7
40.0											0.8	0.5	0.5
42.0											0.6		


\* Over rear · Nach hinten · A l'arrière · Hacia atrás · Indietro · Назад

\*\* With additional lifting equipment · Mit Zusatzhubausrüstung · Avec équipement de levage supplémentaire


Con equipamiento de elevación adicional · Con attrezzaggio di sollevamento supplementare · С дополнительным подъемным оборудованием

Operation · Einsatz · Utilisation  
 Uso · Эксплуатация



 m	11.1 m*	11.1 m	14.8 m	18.5 m	22.1 m	25.8 m	29.5 m	33.2 m	36.9 m	40.5 m	44.2 m	47.9 m	51.2 m
2.3	100.0**												
2.5	90.0**												
3.0	80.8**	75.6**	65.0	65.0									
3.5	73.0	68.6	65.0	65.0	50.0								
4.0	66.5	62.6	62.1	61.4	50.0	41.3							
4.5	61.0	57.4	56.9	56.5	50.0	41.3							
5.0	54.8	52.9	52.3	51.9	49.9	39.2	31.6						
6.0	45.0	44.3	43.6	40.6	38.4	34.9	31.6	23.8					
7.0	35.4	35.5	34.3	32.2	31.8	31.2	28.5	23.8	19.7	15.8			
8.0	27.4	27.4	26.5	27.9	27.8	26.2	24.6	23.0	19.7	15.8	12.9		
9.0	22.0	22.1	23.2	23.8	23.8	22.5	21.1	20.8	18.9	15.8	12.9	10.2	
10.0			19.3	19.9	19.9	19.6	18.4	18.2	16.5	15.8	12.9	10.2	8.9
11.0			16.4	16.9	17.0	16.7	16.2	16.1	15.9	14.2	12.9	10.2	8.9
12.0			14.1	14.6	14.7	14.4	14.2	14.4	14.2	12.9	12.5	10.2	8.9
14.0				11.3	11.8	11.9	12.0	11.6	11.8	11.3	10.8	10.1	8.9
16.0				8.9	9.4	9.4	9.5	9.4	9.4	9.1	8.9	8.3	8.1
18.0					7.7	7.7	7.8	7.6	7.6	7.3	7.2	6.8	6.7
20.0					6.4	6.4	6.4	6.3	6.2	6.0	5.8	5.5	5.5
22.0						5.3	5.4	5.3	5.2	4.9	4.8	4.5	4.4
24.0							4.6	4.4	4.4	4.1	3.9	3.6	3.6
26.0							3.9	3.7	3.7	3.4	3.3	2.9	2.9
28.0								3.2	3.1	2.8	2.7	2.4	2.4
30.0								2.7	2.6	2.4	2.2	1.9	1.9
32.0									2.2	1.9	1.8	1.5	1.5
34.0									1.9	1.6	1.4	1.1	1.1
36.0										1.3	1.1	0.8	0.8
38.0										1.0	0.8	0.5	0.5
40.0											0.6		




 m	11.1 m*	11.1 m	14.8 m	18.5 m	22.1 m	25.8 m	29.5 m	33.2 m	36.9 m	40.5 m	44.2 m	47.9 m	51.2 m
2.3	100.0**												
2.5	90.0**												
3.0	80.6**	75.4**	65.0	65.0									
3.5	72.8	68.5	65.0	65.0	50.0								
4.0	66.3	62.4	61.9	61.4	50.0	41.3							
4.5	60.8	57.2	56.7	56.4	50.0	41.3							
5.0	54.2	52.5	51.9	50.2	47.9	39.2	31.6						
6.0	44.4	44.0	41.7	38.9	36.8	34.2	31.6	23.8					
7.0	33.9	34.0	32.8	30.8	31.8	30.0	27.9	23.8	19.7	15.8			
8.0	26.2	26.2	25.2	27.9	26.7	25.1	23.5	21.9	19.7	15.8	12.9		
9.0	21.0	21.0	22.2	22.8	22.8	21.5	20.2	19.9	18.1	15.8	12.9	10.2	
10.0			18.4	19.0	19.0	18.7	17.5	17.4	16.1	15.3	12.9	10.2	8.9
11.0			15.6	16.2	16.2	15.9	15.4	15.4	15.1	13.5	12.9	10.2	8.9
12.0			13.4	13.9	14.5	13.7	14.2	13.7	13.5	12.9	11.8	10.2	8.9
14.0				10.7	11.2	11.2	11.3	11.2	11.2	10.7	10.2	9.5	8.9
16.0				8.4	8.9	8.9	9.0	8.8	8.8	8.5	8.4	7.8	7.6
18.0					7.2	7.2	7.3	7.2	7.1	6.8	6.7	6.3	6.3
20.0					5.9	5.9	6.0	5.9	5.8	5.6	5.4	5.1	5.1
22.0						4.9	5.0	4.9	4.8	4.6	4.4	4.1	4.1
24.0							4.2	4.1	4.0	3.8	3.6	3.3	3.3
26.0							3.6	3.4	3.4	3.1	3.0	2.6	2.6
28.0								2.9	2.8	2.6	2.4	2.1	2.1
30.0								2.4	2.4	2.1	1.9	1.6	1.6
32.0									2.0	1.7	1.6	1.2	1.2
34.0									1.6	1.4	1.2	0.9	0.9
36.0										1.1	0.9	0.6	0.6
38.0										0.8	0.6		

\* Over rear · Nach hinten · A l'arrière · Hacia atrás · Indietro · Hazað

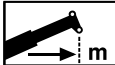
\*\* With additional lifting equipment · Mit Zusatzhubausrüstung · Avec équipement de levage supplémentaire

Con equipamiento de elevación adicional · Con attrezzaggio di sollevamento supplementare · С дополнительным подъемным оборудованием



 m	11.1 m*	11.1 m	14.8 m	18.5 m	22.1 m	25.8 m	29.5 m	33.2 m	36.9 m	40.5 m	44.2 m	47.9 m	51.2 m
2.3	100.0**												
2.5	90.0**												
3.0	80.3**	75.3**	65.0	65.0									
3.5	72.6	68.2	65.0	65.0	50.0								
4.0	66.1	62.2	61.7	61.4	50.0	41.3							
4.5	59.9	57.0	56.5	56.1	50.0	41.3							
5.0	53.5	52.0	51.4	48.8	45.4	39.2	31.6						
6.0	43.8	43.5	39.5	36.7	34.8	34.2	30.8	23.8					
7.0	32.0	32.0	30.9	29.9	30.3	28.4	26.4	23.8	19.7	15.8			
8.0	24.6	24.6	25.1	26.5	25.3	23.8	22.2	20.9	19.7	15.8	12.9		
9.0	19.7	19.7	20.9	21.5	21.6	20.4	19.0	18.8	17.0	15.8	12.9	10.2	
10.0			17.3	17.9	18.0	17.7	16.5	16.4	16.1	14.3	12.9	10.2	8.9
11.0			14.6	15.2	15.5	15.0	15.2	14.4	14.2	12.9	12.3	10.2	8.9
12.0			12.5	13.0	13.6	13.6	13.8	13.1	13.0	12.3	11.0	10.2	8.9
14.0				9.9	10.4	10.4	10.5	10.4	10.3	9.9	9.4	8.7	8.5
16.0				7.7	8.2	8.2	8.3	8.2	8.1	7.8	7.7	7.1	6.9
18.0					6.6	6.6	6.7	6.6	6.5	6.2	6.1	5.8	5.7
20.0					5.4	5.4	5.5	5.4	5.3	5.0	4.9	4.6	4.5
22.0						4.5	4.6	4.4	4.4	4.1	4.0	3.6	3.6
24.0							3.8	3.7	3.6	3.3	3.2	2.9	2.9
26.0							3.2	3.1	3.0	2.7	2.6	2.3	2.3
28.0								2.5	2.5	2.2	2.1	1.7	1.7
30.0								2.1	2.0	1.8	1.6	1.3	1.3
32.0									1.7	1.4	1.3	0.9	0.9
34.0									1.4	1.1	0.9	0.6	0.6
36.0										0.8	0.6		
38.0										0.6			



 m	11.1 m*	11.1 m	14.8 m	18.5 m	22.1 m	25.8 m	29.5 m	33.2 m	36.9 m	40.5 m	44.2 m	47.9 m	51.2 m
2.3	100.0**												
2.5	90.0**												
3.0	80.2**	75.2**	65.0	65.0									
3.5	72.4	68.1	65.0	65.0	50.0								
4.0	66.0	62.1	61.6	61.2	50.0	41.3							
4.5	59.4	56.9	56.4	54.7	50.0	41.3							
5.0	53.1	51.7	51.1	47.3	44.0	39.2	31.6						
6.0	42.9	42.9	38.2	35.6	34.1	33.8	29.8	23.8					
7.0	30.9	30.9	29.9	29.9	29.4	27.5	25.6	23.8	19.7	15.8			
8.0	23.8	23.8	25.1	25.7	24.5	23.0	21.5	20.9	19.1	15.8	12.9		
9.0	19.0	19.0	20.2	20.8	20.9	19.7	18.4	18.2	16.3	15.8	12.9	10.2	
10.0			16.7	17.3	17.3	17.1	16.3	15.8	15.5	13.7	12.9	10.2	8.9
11.0			14.1	14.6	15.3	14.6	15.2	14.0	14.0	12.9	11.8	10.2	8.9
12.0			11.9	12.5	13.1	13.1	13.3	13.0	12.5	11.8	11.0	10.2	8.9
14.0				9.4	9.9	10.0	10.1	9.9	9.9	9.5	9.0	8.3	8.1
16.0				7.3	7.8	7.8	7.9	7.8	7.7	7.5	7.3	6.8	6.6
18.0					6.3	6.3	6.4	6.2	6.2	5.9	5.8	5.4	5.4
20.0					5.1	5.1	5.2	5.1	5.0	4.7	4.6	4.3	4.3
22.0						4.2	4.3	4.2	4.1	3.8	3.7	3.4	3.4
24.0							3.6	3.4	3.4	3.1	3.0	2.6	2.6
26.0							3.0	2.8	2.8	2.5	2.4	2.1	2.0
28.0								2.4	2.3	2.0	1.9	1.6	1.5
30.0								1.9	1.9	1.6	1.4	1.1	1.1
32.0									1.5	1.2	1.1	0.8	0.8
34.0									1.2	0.9	0.8	0.5	
36.0										0.7	0.5		
38.0										0.5			


\* Over rear · Nach hinten · A l'arrière · Hacia atrás · Indietro · Назад

\*\* With additional lifting equipment · Mit Zusatzhubausrüstung · Avec équipement de levage supplémentaire


Con equipamiento de elevación adicional · Con attrezzaggio di sollevamento supplementare · С дополнительным подъемным оборудованием

Operation · Einsatz · Utilisation  
 Uso · Эксплуатация



 m	11.1 m*	11.1 m	14.8 m	18.5 m	22.1 m	25.8 m	29.5 m	33.2 m	36.9 m	40.5 m	44.2 m	47.9 m	51.2 m
2.3	100.0**												
2.5	90.0**												
3.0	79.9**	75.0**	65.0	65.0									
3.5	72.2	67.9	65.0	65.0	50.0								
4.0	65.8	61.8	61.4	61.0	50.0	41.3							
4.5	58.6	56.4	55.8	51.5	48.6	41.3							
5.0	52.3	51.1	48.7	44.6	41.5	37.7	31.6						
6.0	40.2	40.4	36.0	33.5	34.1	31.9	28.5	23.8					
7.0	28.9	29.0	28.0	29.3	27.7	26.0	24.1	22.3	19.7	15.8			
8.0	22.2	22.2	23.5	24.2	23.1	21.7	20.2	19.9	17.8	15.8	12.9		
9.0	17.7	17.7	18.9	19.5	19.6	18.5	17.7	17.0	16.1	14.6	12.9	10.2	
10.0			15.6	16.2	16.5	15.8	16.3	14.9	14.8	12.9	12.4	10.2	8.9
11.0			12.9	13.6	14.2	14.2	14.3	13.6	13.0	12.3	11.0	10.2	8.9
12.0			10.9	11.5	12.1	12.1	12.2	12.0	11.5	10.9	10.3	9.6	8.9
14.0				8.6	9.1	9.2	9.3	9.1	9.1	8.7	8.2	7.6	7.4
16.0				6.6	7.1	7.1	7.2	7.1	7.1	6.8	6.6	6.1	5.9
18.0					5.7	5.7	5.8	5.7	5.6	5.3	5.2	4.8	4.8
20.0					4.6	4.6	4.7	4.6	4.5	4.2	4.1	3.8	3.7
22.0						3.8	3.8	3.7	3.6	3.4	3.2	2.9	2.9
24.0							3.2	3.0	3.0	2.7	2.6	2.2	2.2
26.0							2.6	2.5	2.4	2.1	2.0	1.7	1.7
28.0								2.0	1.9	1.7	1.5	1.2	1.2
30.0								1.6	1.5	1.3	1.1	0.8	0.8
32.0									1.2	0.9	0.8	0.5	
34.0									0.9	0.7	0.5		




 m	11.1 m*	11.1 m	14.8 m	18.5 m	22.1 m	25.8 m	29.5 m	33.2 m	36.9 m	40.5 m	44.2 m	47.9 m	51.2 m
2.3	100.0**												
2.5	90.0**												
3.0	79.4**	74.4	65.0	65.0									
3.5	71.7	67.3	65.0	65.0	50.0								
4.0	64.4	61.3	60.7	54.7	50.0	41.3							
4.5	56.7	55.1	51.0	45.9	42.3	37.9							
5.0	48.7	48.8	42.2	38.6	36.0	34.2	31.0						
6.0	35.3	35.4	31.0	32.0	30.0	27.8	25.6	23.5					
7.0	26.3	26.4	26.5	25.5	24.1	22.5	20.9	20.2	17.8	15.8			
8.0	20.1	20.1	21.4	20.9	19.8	18.5	18.7	17.2	16.1	14.2	12.9		
9.0	16.0	15.9	17.1	17.3	17.2	16.4	15.8	15.0	14.3	12.9	11.7	10.2	
10.0			13.9	14.5	14.6	14.1	13.6	12.9	12.3	11.5	10.9	10.1	8.9
11.0			11.4	12.1	12.7	12.2	11.9	11.3	10.8	10.1	9.5	8.7	8.5
12.0			9.6	10.2	10.8	10.7	10.5	9.9	9.5	8.9	8.3	7.7	7.4
14.0				7.5	8.0	8.1	8.2	7.8	7.5	7.0	6.5	5.9	5.8
16.0				5.7	6.2	6.3	6.4	6.2	6.1	5.6	5.2	4.7	4.5
18.0					4.9	4.9	5.0	4.9	4.9	4.5	4.2	3.7	3.6
20.0					4.0	4.0	4.0	3.9	3.8	3.6	3.3	2.9	2.8
22.0						3.2	3.3	3.1	3.1	2.8	2.7	2.2	2.1
24.0							2.6	2.5	2.4	2.2	2.0	1.7	1.6
26.0							2.2	2.0	1.9	1.7	1.5	1.2	1.2
28.0								1.6	1.5	1.2	1.1	0.8	0.8
30.0								1.2	1.1	0.9	0.7		
32.0									0.8	0.6			
34.0									0.6				

\* Over rear · Nach hinten · A l'arrière · Hacia atrás · Indietro · Hazað

\*\* With additional lifting equipment · Mit Zusatzhubausrüstung · Avec équipement de levage supplémentaire

Con equipamiento de elevación adicional · Con attrezzaggio di sollevamento supplementare · С дополнительным подъемным оборудованием



 m	11.1 m*	11.1 m	14.8 m	18.5 m	22.1 m	25.8 m	29.5 m	33.2 m	36.9 m	40.5 m	44.2 m	47.9 m	51.2 m
2.3	100.0**												
2.5	90.0**												
3.0	79.4**	74.4	65.0	65.0									
3.5	71.7	67.3	65.0	65.0	50.0								
4.0	64.4	61.3	60.7	54.7	50.0	41.3							
4.5	56.7	55.1	51.0	44.6	42.3	37.9							
5.0	48.8	48.8	42.2	38.6	36.0	34.2	31.0						
6.0	35.4	35.4	31.0	32.0	30.0	27.8	25.6	23.5					
7.0	26.3	26.4	26.5	25.5	24.1	22.5	20.9	20.2	17.8	15.8			
8.0	20.1	20.1	21.4	20.9	19.8	18.5	18.7	17.2	16.1	14.2	12.9		
9.0	16.0	15.9	17.1	17.3	17.2	16.4	15.8	15.0	14.3	12.9	11.7	10.2	
10.0			13.9	14.5	14.6	14.1	13.6	12.9	12.3	11.5	10.9	10.1	8.9
11.0			11.4	12.1	12.7	12.2	11.9	11.3	10.8	10.1	9.5	8.7	8.5
12.0			9.6	10.2	10.8	10.7	10.5	9.9	9.5	8.9	8.3	7.7	7.4
14.0				7.5	8.0	8.1	8.2	7.8	7.5	7.0	6.5	5.9	5.8
16.0				5.7	6.2	6.3	6.4	6.2	6.1	5.6	5.2	4.7	4.5
18.0					4.9	4.9	5.0	4.9	4.9	4.5	4.2	3.7	3.6
20.0					4.0	4.0	4.0	3.9	3.8	3.6	3.3	2.9	2.8
22.0						3.2	3.3	3.1	3.1	2.8	2.7	2.2	2.1
24.0							2.6	2.5	2.4	2.2	2.0	1.7	1.6
26.0							2.2	2.0	1.9	1.7	1.5	1.2	1.2
28.0								1.6	1.5	1.2	1.1	0.8	0.8
30.0								1.2	1.1	0.9	0.7		
32.0									0.8	0.6			
34.0									0.6				

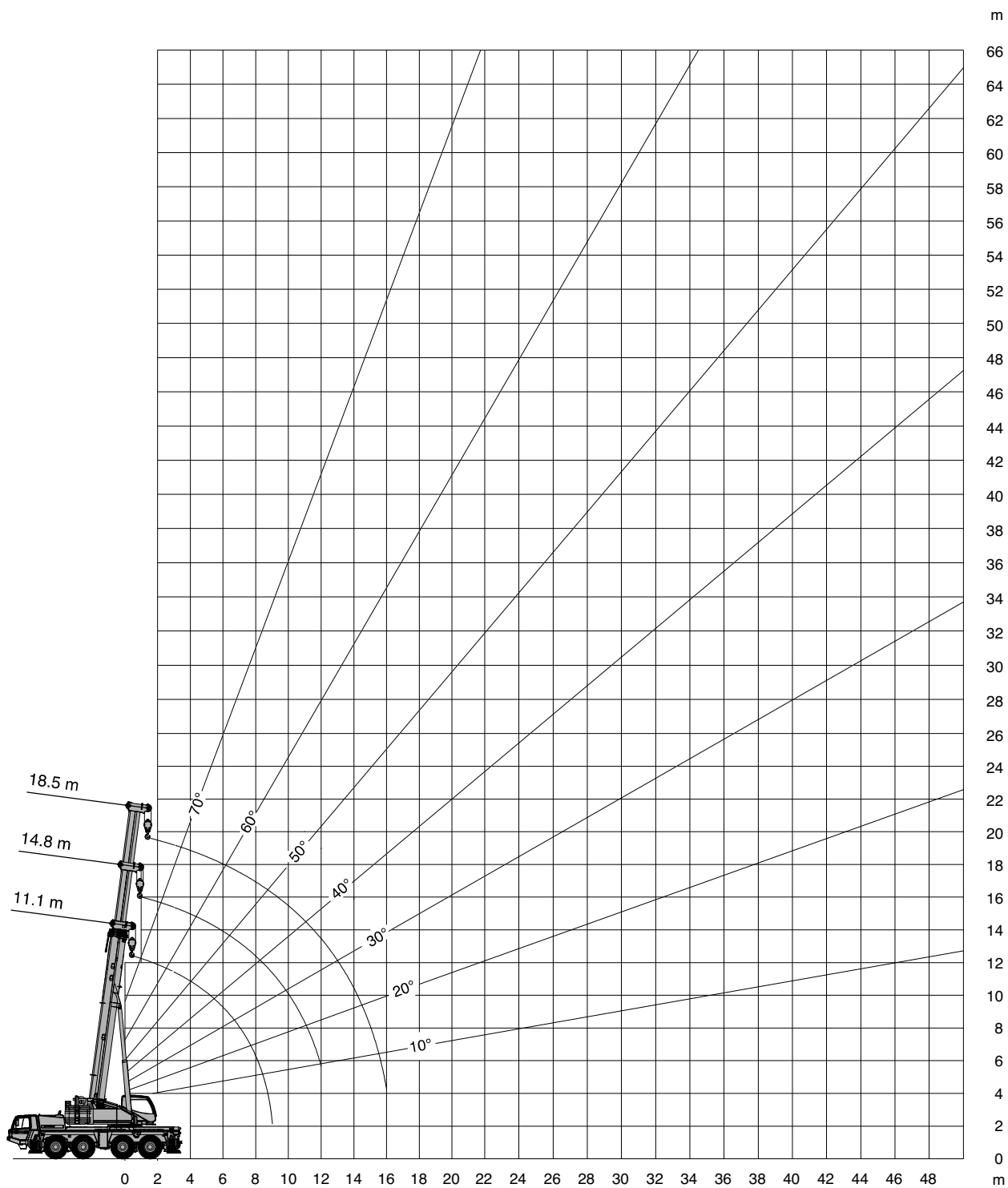
\* Over rear · Nach hinten · A l'arrière · Hacia atrás · Indietro · Назад

\*\* With additional lifting equipment · Mit Zusatzhubausrüstung · Avec équipement de levage supplémentaire

Con equipamiento de elevación adicional · Con attrezzaggio di sollevamento supplementare · С дополнительным подъемным оборудованием

Operation · Einsatz · Utilisation  
 Uso · Эксплуатация


Working range · Arbeitsbereich · Rayon de travail  
 Zona de trabajo · Area di lavoro · Рабочая зона



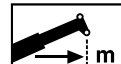


Lifting capacities · Traglasten · Charges de levage  
 Cargas · Portate · Грузоподъемность


   **22.5t** **DIN/ISO/EN**

 m	11.1 m	14.8 m	18.5 m
3.0	17.4	17.9	18.2
3.5	15.8	16.4	16.6
4.0	14.4	15.0	15.2
4.5	13.2	13.8	14.1
5.0	12.2	12.7	13.0
6.0	10.5	11.0	11.2
7.0	9.1	9.6	9.8
8.0	8.0	8.5	8.7
9.0	7.1	7.5	7.8
10.0		6.7	7.0
11.0		6.1	6.3
12.0		5.5	5.8
14.0			4.8
16.0			3.9


   **19.6t** **DIN/ISO/EN**

 m	11.1 m	14.8 m	18.5 m
3.0	17.6	18.1	18.3
3.5	16.0	16.5	16.8
4.0	14.6	15.1	15.4
4.5	13.4	13.9	14.2
5.0	12.3	12.9	13.1
6.0	10.5	11.1	11.4
7.0	9.1	9.6	9.9
8.0	7.9	8.4	8.7
9.0	6.9	7.4	7.8
10.0		6.6	6.9
11.0		5.9	6.2
12.0		5.2	5.6
14.0			4.5
16.0			3.5


   **16.3t** **DIN/ISO/EN**

 m	11.1 m	14.8 m	18.5 m
3.0	17.8	18.3	18.6
3.5	16.2	16.7	17.0
4.0	14.8	15.3	15.6
4.5	13.5	14.1	14.4
5.0	12.5	13.0	13.3
6.0	10.7	11.2	11.5
7.0	9.3	9.8	10.1
8.0	8.2	8.6	8.9
9.0	7.0	7.6	8.0
10.0		6.7	7.0
11.0		5.7	6.1
12.0		4.8	5.2
14.0			3.9
16.0			3.0


   **13.4t** **DIN/ISO/EN**

 m	11.1 m	14.8 m	18.5 m
3.0	18.0	18.5	18.7
3.5	16.4	16.9	17.1
4.0	14.9	15.5	15.7
4.5	13.7	14.3	14.5
5.0	12.6	13.2	13.4
6.0	10.8	11.4	11.6
7.0	9.3	9.9	10.2
8.0	7.7	8.5	8.9
9.0	6.2	7.0	7.4
10.0		5.8	6.3
11.0		4.9	5.3
12.0		4.1	4.6
14.0			3.4
16.0			2.5

   **11.8t** **DIN/ISO/EN**


 m	11.1 m	14.8 m	18.5 m
3.0	18.1	18.6	18.9
3.5	16.5	17.0	17.2
4.0	15.0	15.6	15.8
4.5	13.8	14.3	14.6
5.0	12.7	13.3	13.5
6.0	10.8	11.4	11.7
7.0	8.9	9.8	10.2
8.0	7.1	7.9	8.4
9.0	5.7	6.5	6.9
10.0		5.4	5.8
11.0		4.5	4.9
12.0		3.8	4.2
14.0			3.0
16.0			2.2

   **10.2t** **DIN/ISO/EN**


 m	11.1 m	14.8 m	18.5 m
3.0	18.2	18.7	18.9
3.5	16.6	17.1	17.3
4.0	15.1	15.7	15.9
4.5	13.9	14.4	14.7
5.0	12.8	13.3	13.6
6.0	10.6	11.5	11.8
7.0	8.2	9.1	9.6
8.0	6.5	7.4	7.8
9.0	5.2	6.0	6.4
10.0		4.9	5.4
11.0		4.1	4.5
12.0		3.5	3.9
14.0			2.9
16.0			2.0

Operation · Einsatz · Utilisation  
 Uso · Эксплуатация


   **8.9t** **DIN/ISO/EN**

 m	11.1 m	14.8 m	18.5 m
3.0	18.3	18.8	19.0
3.5	16.6	17.2	17.4
4.0	15.2	15.7	16.0
4.5	13.9	14.5	14.7
5.0	12.8	13.4	13.7
6.0	10.0	11.0	11.4
7.0	7.7	8.6	9.0
8.0	6.0	6.9	7.3
9.0	4.8	5.6	6.0
10.0		4.6	5.0
11.0		3.8	4.2
12.0		3.1	3.5
14.0			2.5
16.0			1.7


   **7.6t** **DIN/ISO/EN**

 m	11.1 m	14.8 m	18.5 m
3.0	18.4	18.9	19.1
3.5	16.7	17.2	17.5
4.0	15.3	15.8	16.1
4.5	14.0	14.6	14.8
5.0	12.6	13.5	13.7
6.0	9.4	10.3	10.8
7.0	7.2	8.0	8.5
8.0	5.6	6.4	6.9
9.0	4.4	5.2	5.6
10.0		4.2	4.6
11.0		3.4	3.8
12.0		2.8	3.2
14.0			2.2
16.0			1.5


   **6.0t** **DIN/ISO/EN**

 m	11.1 m	14.8 m	18.5 m
3.0	18.5	19.0	19.2
3.5	16.8	17.3	17.6
4.0	15.3	15.9	16.1
4.5	13.8	14.6	14.6
5.0	11.6	12.6	13.1
6.0	8.6	9.5	10.0
7.0	6.5	7.4	7.8
8.0	5.1	5.8	6.3
9.0	4.0	4.7	5.2
10.0		3.9	4.3
11.0		3.2	3.6
12.0		2.6	3.0
14.0			2.1
16.0			1.4


   **5.1t** **DIN/ISO/EN**

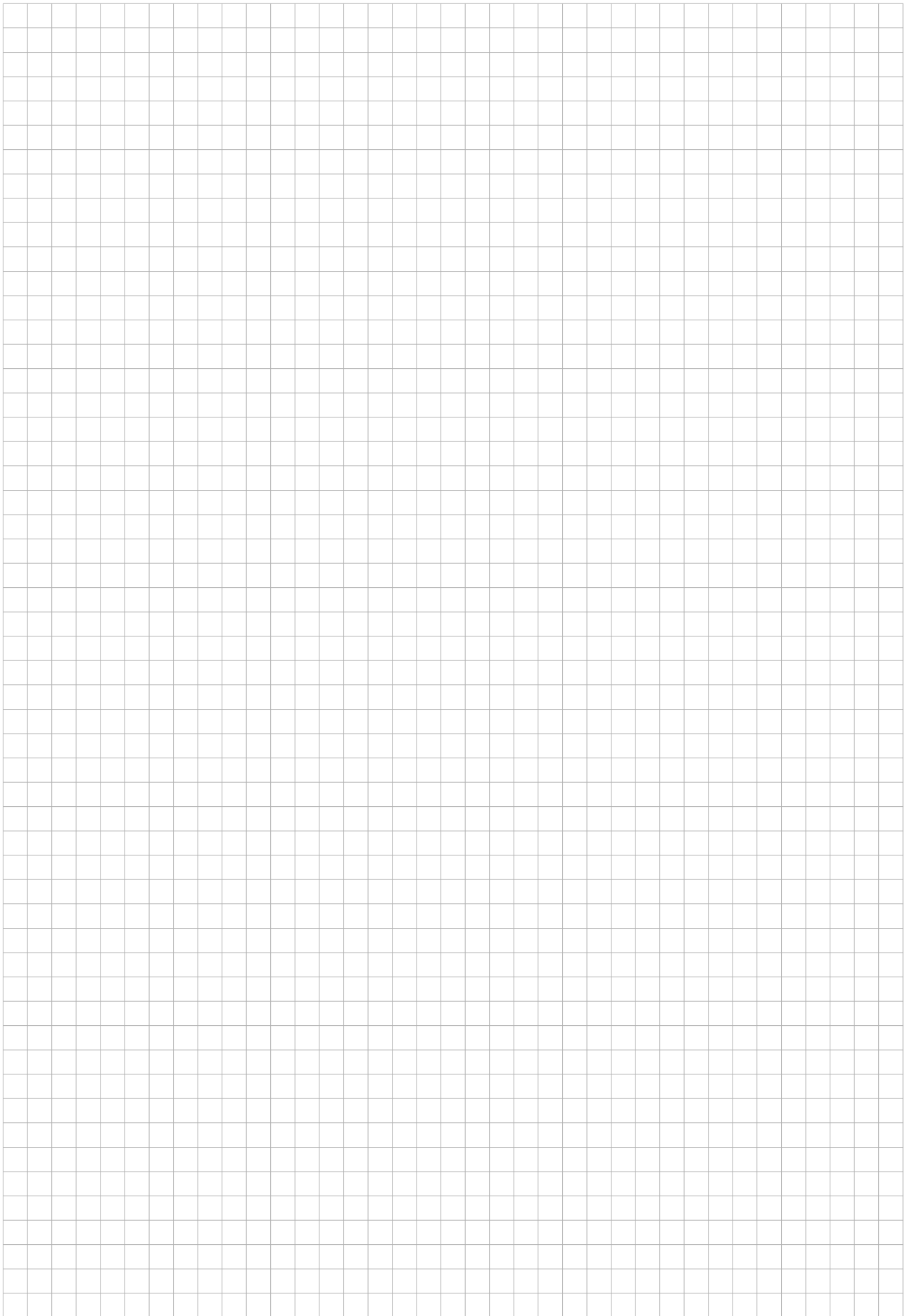
 m	11.1 m	14.8 m	18.5 m
3.0	18.5	19.0	19.3
3.5	16.9	17.4	17.6
4.0	15.4	15.9	15.8
4.5	13.1	14.2	14.0
5.0	11.1	12.1	12.5
6.0	8.1	9.1	9.5
7.0	6.1	7.0	7.5
8.0	4.7	5.5	6.0
9.0	3.6	4.4	4.8
10.0		3.5	4.0
11.0		2.9	3.3
12.0		2.3	2.8
14.0			1.9
16.0			1.2

   **3.5t** **DIN/ISO/EN**

 m	11.1 m	14.8 m	18.5 m
3.0	18.6	19.1	19.3
3.5	16.9	17.5	16.8
4.0	14.6	15.3	14.7
4.5	12.0	13.1	13.0
5.0	10.1	11.1	11.6
6.0	7.3	8.3	8.7
7.0	5.4	6.3	6.8
8.0	4.1	4.9	5.4
9.0	3.1	3.9	4.3
10.0		3.0	3.5
11.0		2.4	2.8
12.0		1.8	2.2
14.0			1.4
16.0			0.8

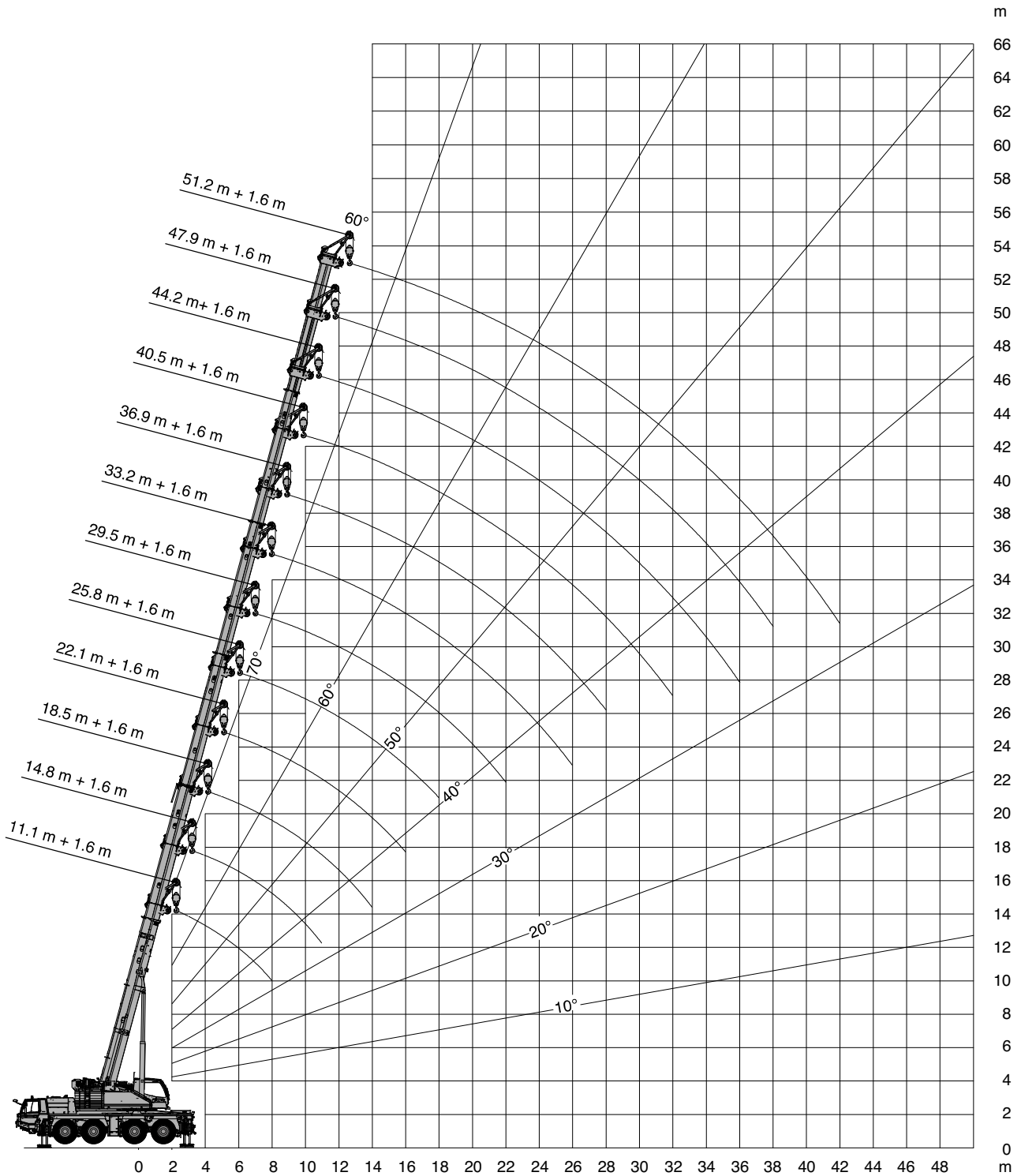
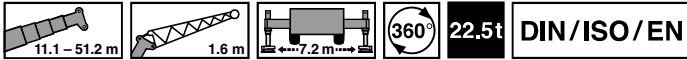
   **1.0t** **DIN/ISO/EN**

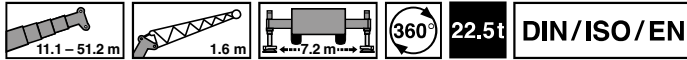
 m	11.1 m	14.8 m	18.5 m
3.0	18.8	18.2	17.1
3.5	15.7	15.5	14.8
4.0	12.6	13.4	12.9
4.5	10.3	11.4	11.4
5.0	8.6	9.6	10.1
6.0	6.1	7.0	7.5
7.0	4.4	5.3	5.8
8.0	3.2	4.0	4.5
9.0	2.3	3.1	3.5
10.0		2.3	2.8
11.0		1.7	2.2
12.0		1.3	1.7
14.0			0.9



Operation · Einsatz · Utilisation  
 Uso · Эксплуатация

Working range · Arbeitsbereich · Rayon de travail  
 Zona de trabajo · Area di lavoro · Рабочая зона

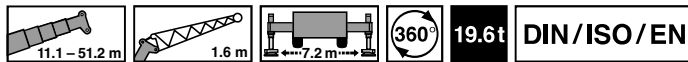




m	11.1 m + 1.6 m			14.8 m + 1.6 m			18.5 m + 1.6 m			22.1 m + 1.6 m			25.8 m + 1.6 m			29.5 m + 1.6 m		
	20°	40°	60°	20°	40°	60°	20°	40°	60°	20°	40°	60°	20°	40°	60°	20°	40°	60°
3.0			26.2															
3.5			26.2															
4.0			26.2			26.2												
4.5			26.2			26.2												
5.0			26.2			26.2			26.2									
6.0		26.2	26.2			26.2			26.2			26.2						
7.0	26.2	26.2	26.2			26.2			26.2			26.2			26.2			
8.0	26.2	26.2	26.2		26.2	26.2			26.2			26.2			24.5			21.3
9.0	26.2	26.2			26.2	26.2		26.2	26.2			26.2			22.8			19.9
10.0	26.0	26.2		26.2	26.2	26.2		26.1	26.2			24.9			21.4			18.7
11.0				22.6	22.8	23.0		22.1	22.4		22.2	22.4			20.1			17.6
12.0				19.5	19.7		18.8	19.0	19.2		19.1	19.3			19.0			16.6
14.0				15.1			14.4	14.6	14.7		14.6	14.8		14.9	15.0			15.0
16.0							11.3	11.5		11.4	11.5	11.6		11.8	11.9		12.1	12.3
18.0							8.2			9.1	9.2		9.4	9.5	9.6		9.8	9.9
20.0										7.4	7.5		7.6	7.7		8.0	8.1	8.2
22.0													6.3	6.4		6.6	6.7	6.8
24.0													5.2	5.3		5.5	5.6	
26.0																4.6	4.7	
28.0																3.9		

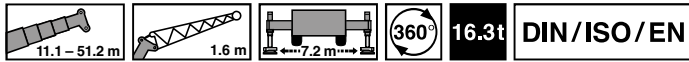
m	33.2 m + 1.6 m			36.9 m + 1.6 m			40.5 m + 1.6 m			44.2 m + 1.6 m			47.9 m + 1.6 m			51.2 m + 1.6 m		
	20°	40°	60°	20°	40°	60°	20°	40°	60°	20°	40°	60°	20°	40°	60°	20°	40°	60°
10.0			15.7															
11.0			15.2			13.3												
12.0			14.6			13.0												
14.0			13.2			11.7			10.5			9.1						
16.0			12.0			10.7			9.6			8.6			7.3			6.7
18.0		10.4	10.5			9.8			8.8			8.0			6.9			6.4
20.0		8.6	8.7		8.5	8.6			8.1			7.4			6.5			6.0
22.0		7.2	7.3		7.1	7.2		7.2	7.3			6.9			6.1			5.6
24.0	6.0	6.1	6.1		6.0	6.1		6.1	6.1			6.3			5.8			5.3
26.0	5.1	5.1	5.2	5.0	5.1	5.1		5.1	5.2		5.3	5.4			5.4			5.0
28.0	4.3	4.4		4.2	4.3	4.3		4.4	4.4		4.5	4.6		4.9	4.9			4.7
30.0	3.7	3.7		3.6	3.6		3.6	3.7	3.7		3.9	3.9		4.2	4.2		4.2	4.2
32.0	3.1			3.0	3.1		3.1	3.1	3.2	3.2	3.3	3.3		3.6	3.6		3.6	3.6
34.0				2.5	2.6		2.6	2.6		2.7	2.8	2.8	2.7	3.1	3.1		3.1	3.1
36.0				2.1			2.2	2.2		2.3	2.3	2.4	2.6	2.6	2.7		2.6	2.7
38.0							1.8	1.8		1.9	2.0		2.2	2.3	2.3		2.2	2.3
40.0							1.5			1.6	1.6		1.9	1.9		1.9	1.9	1.9
42.0										1.3	1.3		1.6	1.6		1.6	1.6	1.6
44.0													1.3	1.3		1.3		1.3
46.0													1.0	1.1		1.0		1.0
48.0																0.8		

Operation · Einsatz · Utilisation  
 Uso · Эксплуатация



m	11.1 m + 1.6 m			14.8 m + 1.6 m			18.5 m + 1.6 m			22.1 m + 1.6 m			25.8 m + 1.6 m			29.5 m + 1.6 m		
	20°	40°	60°	20°	40°	60°	20°	40°	60°	20°	40°	60°	20°	40°	60°	20°	40°	60°
3.0			26.2															
3.5			26.2															
4.0			26.2			26.2												
4.5			26.2			26.2												
5.0			26.2			26.2			26.2									
6.0		26.2	26.2			26.2			26.2			26.2						
7.0	26.2	26.2	26.2			26.2			26.2			26.2			26.2			
8.0	26.2	26.2	26.2		26.2	26.2			26.2			26.2			24.5			21.3
9.0	26.2	26.2	26.2		26.2	26.2			26.2			26.2			22.8			19.9
10.0	25.5	25.6		24.3	24.5	24.7			23.7	23.9			23.0		21.4			18.7
11.0				20.6	20.8	21.0			20.1	20.4			19.8		20.1			17.6
12.0				17.8	17.9		17.0	17.3	17.5			17.3	17.5		17.4			16.6
14.0				13.7			12.9	13.1	13.2			13.2	13.3		13.4	13.6		13.9
16.0							10.1	10.2				10.1	10.3	10.4		10.5	10.7	10.9
18.0							8.1					8.1	8.2		8.3	8.4	8.5	8.8
20.0												6.5	6.6		6.7	6.8		7.0
22.0															5.5	5.5		5.8
24.0															4.5	4.5		4.8
26.0																		3.9
28.0																		3.3

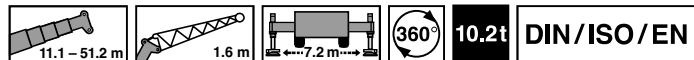
m	33.2 m + 1.6 m			36.9 m + 1.6 m			40.5 m + 1.6 m			44.2 m + 1.6 m			47.9 m + 1.6 m			51.2 m + 1.6 m		
	20°	40°	60°	20°	40°	60°	20°	40°	60°	20°	40°	60°	20°	40°	60°	20°	40°	60°
10.0			15.7															
11.0			15.2			13.3												
12.0			14.6			13.0												
14.0			13.2			11.7			10.5			9.1						
16.0			11.6			10.7			9.6			8.6			7.3			6.7
18.0		9.3	9.4			9.4			8.8			8.0			6.9			6.4
20.0		7.7	7.8			7.6	7.7		7.8			7.4			6.5			6.0
22.0		6.4	6.4			6.3	6.4		6.4	6.5		6.6			6.1			5.6
24.0	5.2	5.3	5.4			5.2	5.3		5.3	5.4		5.6			5.8			5.3
26.0	4.4	4.5	4.5	4.3	4.4	4.4			4.5	4.5		4.6	4.7		5.0			5.0
28.0	3.7	3.7		3.6	3.7	3.7			3.7	3.8		3.9	3.9		4.2	4.3		4.3
30.0	3.1	3.1		3.0	3.0				3.0	3.1	3.2		3.3	3.3		3.6	3.6	3.6
32.0	2.6			2.5	2.5				2.5	2.6	2.6	2.7	2.7	2.8		3.1	3.1	3.0
34.0				2.0	2.0				2.1	2.1		2.2	2.3	2.3	2.5	2.6	2.6	2.6
36.0				1.6					1.7	1.7		1.8	1.9	1.9	2.1	2.2	2.2	2.1
38.0									1.3	1.3		1.5	1.5		1.7	1.8	1.8	1.8
40.0									1.0			1.1	1.2		1.4	1.5		1.4
42.0												0.9	0.9		1.1	1.2		1.1
44.0															0.9	0.9		0.9
46.0															0.6	0.7		0.6



m	11.1 m + 1.6 m			14.8 m + 1.6 m			18.5 m + 1.6 m			22.1 m + 1.6 m			25.8 m + 1.6 m			29.5 m + 1.6 m		
	20°	40°	60°	20°	40°	60°	20°	40°	60°	20°	40°	60°	20°	40°	60°	20°	40°	60°
3.0			26.2															
3.5			26.2															
4.0			26.2			26.2												
4.5			26.2			26.2												
5.0			26.2			26.2			26.2									
6.0		26.2	26.2			26.2			26.2			26.2						
7.0	26.2	26.2	26.2			26.2			26.2			26.2			26.2			
8.0	26.2	26.2	26.2		26.2	26.2			26.2			26.2			24.5			21.3
9.0	26.2	26.2			26.2	26.2			26.2			25.9			22.8			19.9
10.0	23.5	23.7		22.3	22.6	22.8			21.9	22.2		22.2			21.4			18.7
11.0				18.9	19.1	19.3			18.4	18.7		18.5			19.0			17.6
12.0				16.3	16.4		15.5	15.8	15.9		15.8	16.0			16.3			16.6
14.0				12.4			11.7	11.9	12.0		11.9	12.1		12.2	12.4			12.7
16.0							9.1	9.2			9.1	9.2	9.3		9.5	9.6		10.0
18.0							7.2				7.2	7.3		7.4	7.5	7.6		8.0
20.0											5.7	5.8		5.9	6.0		6.2	6.3
22.0														4.7	4.8		5.1	5.2
24.0														3.8	3.9		4.1	4.2
26.0																	3.3	3.4
28.0																	2.7	

m	33.2 m + 1.6 m			36.9 m + 1.6 m			40.5 m + 1.6 m			44.2 m + 1.6 m			47.9 m + 1.6 m			51.2 m + 1.6 m		
	20°	40°	60°	20°	40°	60°	20°	40°	60°	20°	40°	60°	20°	40°	60°	20°	40°	60°
10.0			15.7															
11.0			15.2			13.3												
12.0			14.6			13.0												
14.0			13.2			11.7			10.5			9.1						
16.0			10.6			10.5			9.6			8.6			7.3			6.7
18.0		8.4	8.5			8.4			8.5			8.0			6.9			6.4
20.0		6.9	7.0		6.8	6.9			7.0			7.2			6.5			6.0
22.0		5.7	5.7		5.6	5.7		5.7	5.7			5.9			6.1			5.6
24.0	4.6	4.7	4.7		4.6	4.7		4.7	4.7			4.9			5.3			5.3
26.0	3.8	3.8	3.9	3.7	3.8	3.8		3.8	3.9		4.0	4.1			4.4			4.4
28.0	3.1	3.1		3.0	3.1	3.1		3.1	3.2		3.3	3.4		3.7	3.7			3.7
30.0	2.5	2.6		2.4	2.5		2.5	2.6	2.6		2.7	2.8		3.1	3.1		3.0	3.1
32.0	2.0			1.9	2.0		2.0	2.0	2.1	2.2	2.2	2.3		2.5	2.6		2.5	2.6
34.0				1.5	1.5		1.6	1.6		1.7	1.8	1.8	2.0	2.1	2.1		2.1	2.1
36.0				1.2			1.2	1.2		1.3	1.4	1.4	1.7	1.7	1.7		1.7	1.7
38.0							0.9	0.9		1.0	1.1		1.3	1.4	1.4		1.3	1.4
40.0							0.6			0.7	0.8		1.0	1.0			1.0	1.0
42.0										0.5	0.5		0.7	0.8			0.7	0.8
44.0													0.5	0.5			0.5	

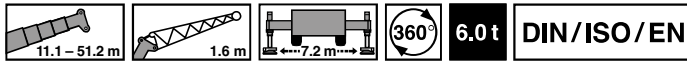
Operation · Einsatz · Utilisation  
 Uso · Эксплуатация



m	11.1 m + 1.6 m			14.8 m + 1.6 m			18.5 m + 1.6 m			22.1 m + 1.6 m			25.8 m + 1.6 m			29.5 m + 1.6 m		
	20°	40°	60°	20°	40°	60°	20°	40°	60°	20°	40°	60°	20°	40°	60°	20°	40°	60°
3.0			26.2															
3.5			26.2															
4.0			26.2			26.2												
4.5			26.2			26.2												
5.0			26.2			26.2			26.2									
6.0		26.2	26.2			26.2			26.2			26.2						
7.0	26.2	26.2	26.2			26.2			26.2			26.2			26.2			
8.0	26.2	26.2	26.2		26.2	26.2			26.2			25.3			24.4			21.3
9.0	23.3	23.5			22.4	22.7			21.6			21.3			20.7			19.9
10.0	19.4	19.5		18.2	18.4	18.6			17.7	18.0		18.1			17.8			17.6
11.0				15.3	15.5	15.6			14.8	15.0		14.9	15.1		15.4			15.4
12.0				13.0	13.2		12.3	12.5	12.7			12.6	12.8		13.1			13.5
14.0				9.8			9.0	9.2	9.3			9.3	9.4		9.5	9.7		10.1
16.0							6.7	6.8				6.7	6.9	7.0	7.1	7.3	7.5	7.7
18.0							5.1					5.0	5.1		5.3	5.4	5.5	5.8
20.0												3.8	3.9		4.0	4.1		4.5
22.0															3.0	3.1		3.5
24.0															2.2	2.3		2.6
26.0																	1.9	1.9
28.0																	1.4	

m	33.2 m + 1.6 m			36.9 m + 1.6 m			40.5 m + 1.6 m			44.2 m + 1.6 m			47.9 m + 1.6 m			51.2 m + 1.6 m		
	20°	40°	60°	20°	40°	60°	20°	40°	60°	20°	40°	60°	20°	40°	60°	20°	40°	60°
10.0			15.7															
11.0			15.2			13.3												
12.0			13.7			13.0												
14.0			10.7			10.5			10.3			9.1						
16.0			8.3			8.2			8.3			8.3			7.3			6.7
18.0		6.3	6.4			6.4			6.5			6.7			6.9			6.4
20.0		5.0	5.1		4.9	5.0			5.1			5.3			5.7			5.7
22.0		3.9	4.0		3.9	3.9			4.0			4.2			4.6			4.6
24.0	3.0	3.1	3.2		3.0	3.1			3.1	3.2		3.4			3.7			3.7
26.0	2.3	2.4	2.5	2.3	2.3	2.4			2.4	2.5		2.6	2.6		3.0			3.0
28.0	1.8	1.8		1.7	1.8	1.8			1.8	1.9		2.0	2.1		2.3	2.4		2.4
30.0	1.3	1.3		1.2	1.3		1.3	1.3	1.4			1.5	1.6		1.8	1.9	1.8	1.9
32.0	0.9			0.8	0.9		0.9	0.9	1.0			1.0	1.1	1.1	1.4	1.5	1.4	1.4
34.0				0.5	0.5		0.5	0.6			0.7	0.7	0.8		1.0	1.0	1.1	1.1
36.0															0.7	0.7	0.7	0.7



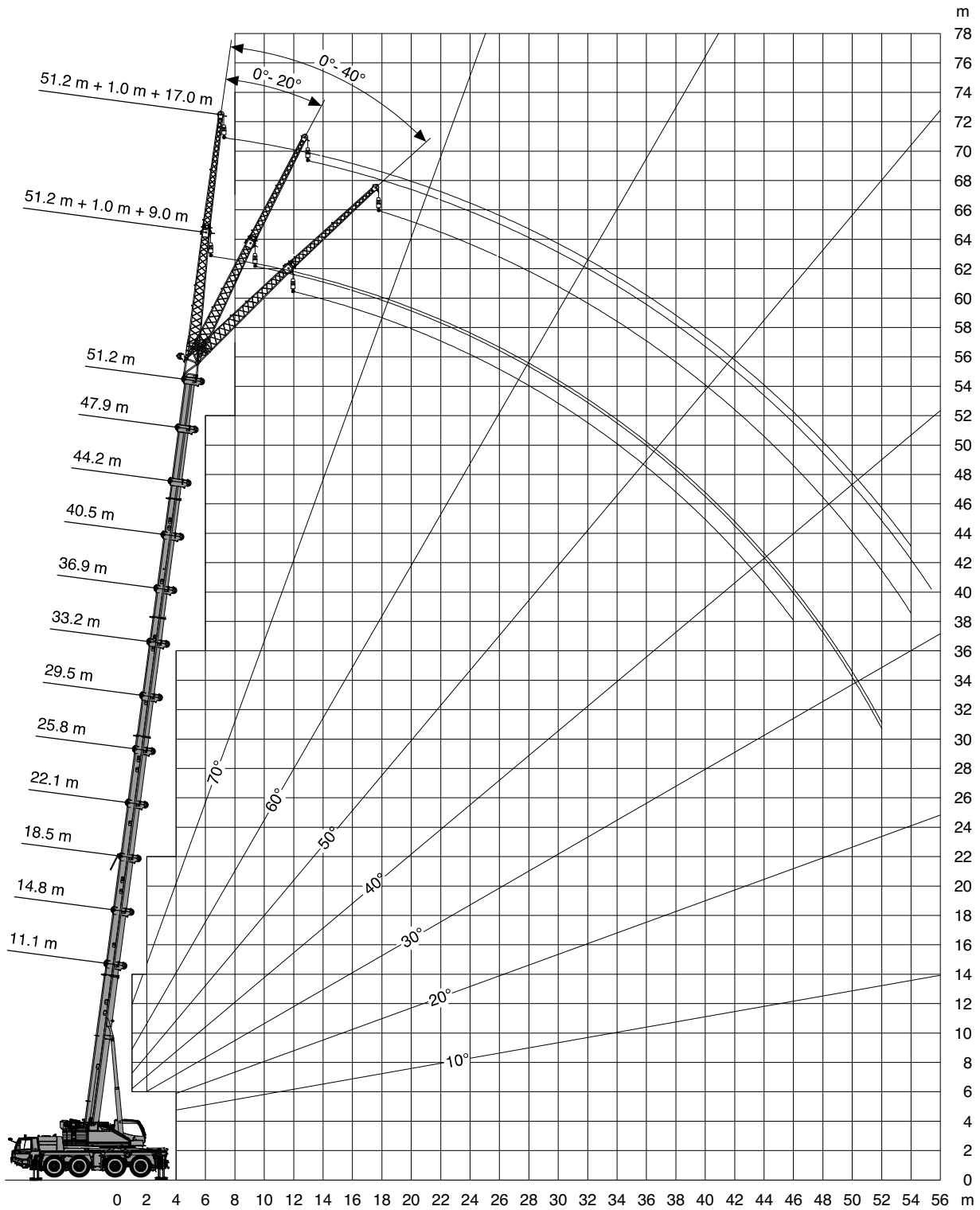
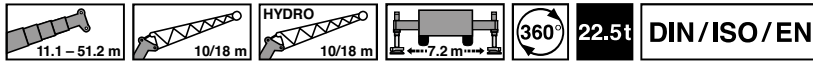


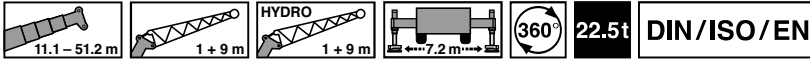
m	11.1 m + 1.6 m			14.8 m + 1.6 m			18.5 m + 1.6 m			22.1 m + 1.6 m			25.8 m + 1.6 m			29.5 m + 1.6 m		
	20°	40°	60°	20°	40°	60°	20°	40°	60°	20°	40°	60°	20°	40°	60°	20°	40°	60°
3.0			26.2															
3.5			26.2															
4.0			26.2			26.2												
4.5			26.2			26.2												
5.0			26.2			26.2			26.2									
6.0		26.2	26.2			26.2			26.2			26.2						
7.0	26.2	26.2	26.2			26.2			26.2			26.2			25.3			
8.0	24.8	25.1	25.4		23.9	24.3			22.8			21.7			21.0			20.5
9.0	20.0	20.2			19.1	19.3		18.3	18.6			18.2			17.7			17.4
10.0	16.5	16.7		15.3	15.6	15.8		14.9	15.1			15.2			15.1			14.9
11.0				12.7	13.0	13.1		12.3	12.5		12.3	12.6			12.9			12.9
12.0				10.6	10.8		9.9	10.1	10.3		10.2	10.4			10.7			11.1
14.0				7.7			6.9	7.1	7.2		7.1	7.3		7.4	7.6			8.0
16.0							4.9	5.1		4.9	5.1	5.2		5.4	5.5		5.8	5.9
18.0							3.6			3.5	3.6		3.7	3.9	4.0		4.2	4.4
20.0										2.4	2.5		2.7	2.8		3.0	3.1	3.2
22.0													1.8	1.9		2.1	2.2	2.3
24.0													1.2	1.2		1.5	1.5	
26.0																0.9	1.0	
28.0																0.5		

m	33.2 m + 1.6 m			36.9 m + 1.6 m			40.5 m + 1.6 m			44.2 m + 1.6 m			47.9 m + 1.6 m			51.2 m + 1.6 m		
	20°	40°	60°	20°	40°	60°	20°	40°	60°	20°	40°	60°	20°	40°	60°	20°	40°	60°
10.0			15.0															
11.0			13.0			12.4												
12.0			11.3			10.8												
14.0			8.6			8.4			8.3			8.2						
16.0			6.5			6.4			6.5			6.6			6.8			6.6
18.0		4.8	4.9			4.8			4.9			5.1			5.5			5.3
20.0		3.7	3.7		3.6	3.7			3.8			3.9			4.3			4.3
22.0		2.7	2.8		2.7	2.7		2.8	2.8			3.0			3.4			3.4
24.0	1.9	2.0	2.1		1.9	2.0		2.0	2.1			2.3			2.6			2.6
26.0	1.4	1.4	1.5	1.3	1.3	1.4		1.4	1.5		1.6	1.7			2.0			2.0
28.0	0.9	0.9		0.8	0.9	0.9		0.9	1.0		1.1	1.2		1.4	1.5			1.5
30.0	0.5	0.5						0.5	0.6		0.7	0.7		1.0	1.1			1.0
32.0														0.6	0.7			

Operation · Einsatz · Utilisation  
 Uso · Эксплуатация

Working range · Arbeitsbereich · Rayon de travail  
 Zona de trabajo · Area di lavoro · Рабочая зона

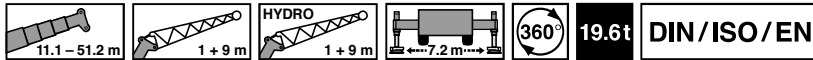




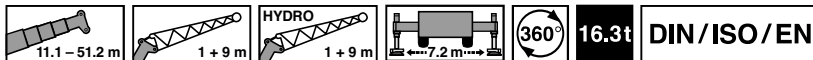
m	11.1 m + 1.0 m + 9.0 m			33.2 m + 1.0 m + 9.0 m			47.9 m + 1.0 m + 9.0 m			51.2 m + 1.0 m + 9.0 m		
	0°	20°	40°	0°	20°	40°	0°	20°	40°	0°	20°	40°
3.0	12.2*											
3.5	12.2*											
4.0	12.2*											
4.5	12.2*											
5.0	12.2*	12.2*										
6.0	12.2*	11.5*										
7.0	12.2*			10.1								
8.0	12.2*	10.2	7.4	10.1								
9.0	12.1*	9.7	7.1	10.1								
10.0	11.3*	9.0	6.7	10.1	9.0							
11.0	10.5	8.5	6.4	10.1	8.6		4.9					
12.0	9.6	8.0	6.2	10.1	8.3		4.9			4.4		
14.0	8.1	7.1	5.8	9.3	7.6	6.7	4.9			4.4		
16.0	7.0	6.5		8.5	7.1	6.3	4.9	4.9		4.4	4.4	
18.0				7.9	6.7	6.0	4.9	4.9	4.7	4.4	4.4	
20.0				7.4	6.3	5.7	4.9	4.8	4.5	4.4	4.4	4.2
22.0				6.9	6.0	5.5	4.9	4.6	4.3	4.4	4.3	4.0
24.0				6.5	5.7	5.2	4.7	4.4	4.1	4.4	4.1	3.9
26.0				5.6	5.5	5.1	4.5	4.2	3.9	4.1	3.9	3.7
28.0				4.8	5.2	4.9	4.3	4.0	3.8	3.9	3.8	3.6
30.0				4.2	4.4	4.6	4.0	3.9	3.6	3.7	3.6	3.5
32.0				3.6	3.8	4.0	3.7	3.7	3.5	3.5	3.4	3.3
34.0				3.1	3.3		3.2	3.5	3.4	3.2	3.3	3.2
36.0				2.7	2.8		2.8	3.0	3.2	2.7	3.0	3.1
38.0				2.3	2.4		2.4	2.6	2.8	2.3	2.6	2.7
40.0				2.0			2.0	2.2	2.4	2.0	2.2	2.3
42.0							1.7	1.9	2.0	1.7	1.9	2.0
44.0							1.4	1.6	1.7	1.4	1.6	1.7
46.0							1.2	1.3		1.1	1.3	1.4
48.0							1.0	1.1		0.9	1.0	
50.0							0.7	0.8		0.7	0.8	
52.0							0.6	0.6		0.5	0.6	

\* With additional lifting equipment · Mit Zusatzhubausrüstung · Avec équipement de levage supplémentaire  
 Con equipamiento de elevación adicional · Con attrezzaggio di sollevamento supplementare · С дополнительным подъемным оборудованием

Operation · Einsatz · Utilisation  
 Uso · Эксплуатация

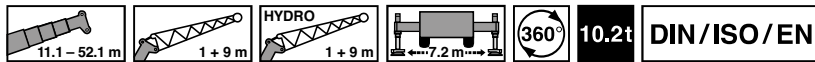


m	11.1 m + 1.0 m + 9.0 m			33.2 m + 1.0 m + 9.0 m			47.9 m + 1.0 m + 9.0 m			51.2 m + 1.0 m + 9.0 m		
	0°	20°	40°	0°	20°	40°	0°	20°	40°	0°	20°	40°
3.0	12.2*											
3.5	12.2*											
4.0	12.2*											
4.5	12.2*											
5.0	12.2*	12.2*										
6.0	12.2*	11.5*										
7.0	12.2*	10.8		10.1								
8.0	12.2*	10.2	7.4	10.1								
9.0	12.1*	9.7	7.1	10.1								
10.0	11.3*	9.0	6.7	10.1	9.0							
11.0	10.5	8.5	6.4	10.1	8.6		4.9					
12.0	9.6	8.0	6.2	10.1	8.3		4.9			4.4		
14.0	8.1	7.1	5.8	9.3	7.6	6.7	4.9			4.4		
16.0	7.0	6.5		8.5	7.1	6.3	4.9	4.9		4.4	4.4	
18.0				7.9	6.7	6.0	4.9	4.9	4.7	4.4	4.4	
20.0				7.4	6.3	5.7	4.9	4.8	4.5	4.4	4.4	4.2
22.0				6.9	6.0	5.5	4.9	4.6	4.3	4.4	4.3	4.0
24.0				5.8	5.7	5.2	4.7	4.4	4.1	4.4	4.1	3.9
26.0				4.9	5.3	5.1	4.5	4.2	3.9	4.1	3.9	3.7
28.0				4.2	4.5	4.8	4.3	4.0	3.8	3.9	3.8	3.6
30.0				3.6	3.9	4.0	3.7	3.9	3.6	3.7	3.6	3.5
32.0				3.0	3.3	3.4	3.2	3.5	3.5	3.1	3.4	3.3
34.0				2.6	2.8		2.7	3.0	3.2	2.7	3.0	3.2
36.0				2.2	2.3		2.3	2.6	2.7	2.2	2.5	2.7
38.0				1.8	1.9		1.9	2.2	2.3	1.9	2.1	2.3
40.0				1.5			1.6	1.8	1.9	1.5	1.8	1.9
42.0							1.3	1.5	1.6	1.2	1.4	1.6
44.0							1.0	1.2	1.3	1.0	1.2	1.3
46.0							0.8	0.9		0.7	0.9	1.0
48.0							0.6	0.7		0.5	0.7	
50.0								0.5				

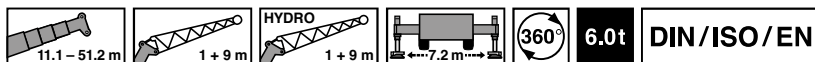


m	11.1 m + 1.0 m + 9.0 m			33.2 m + 1.0 m + 9.0 m			47.9 m + 1.0 m + 9.0 m			51.2 m + 1.0 m + 9.0 m		
	0°	20°	40°	0°	20°	40°	0°	20°	40°	0°	20°	40°
3.0	12.2*											
3.5	12.0*											
4.0	12.2*											
4.5	12.2*											
5.0	12.2*	12.2*										
6.0	12.2*	11.5*										
7.0	12.2*	10.8		10.1								
8.0	12.2*	10.2	7.4	10.1								
9.0	12.1*	9.7	7.1	10.1								
10.0	11.3*	9.0	6.7	10.1	9.0							
11.0	10.5	8.5	6.4	10.1	8.6		4.9					
12.0	9.6	8.0	6.2	10.1	8.3		4.9			4.4		
14.0	8.1	7.1	5.8	9.3	7.6	6.7	4.9			4.4		
16.0	7.0	6.5		8.5	7.1	6.3	4.9	4.9		4.4	4.4	
18.0				7.9	6.7	6.0	4.9	4.9	4.7	4.4	4.4	
20.0				7.4	6.3	5.7	4.9	4.8	4.5	4.4	4.4	4.2
22.0				6.1	6.0	5.5	4.9	4.6	4.3	4.4	4.3	4.0
24.0				5.2	5.6	5.2	4.7	4.4	4.1	4.4	4.1	3.9
26.0				4.3	4.7	5.0	4.5	4.2	3.9	4.1	3.9	3.7
28.0				3.6	4.0	4.2	3.8	4.0	3.8	3.7	3.8	3.6
30.0				3.0	3.3	3.5	3.2	3.6	3.6	3.1	3.5	3.5
32.0				2.5	2.8	2.9	2.7	3.0	3.2	2.6	3.0	3.2
34.0				2.1	2.3		2.2	2.5	2.7	2.2	2.5	2.7
36.0				1.7	1.9		1.8	2.1	2.3	1.8	2.1	2.3
38.0				1.4	1.5		1.5	1.7	1.9	1.4	1.7	1.9
40.0				1.1			1.2	1.4	1.5	1.1	1.4	1.5
42.0							0.9	1.1	1.2	0.9	1.1	1.2
44.0							0.7	0.8	0.9	0.6	0.8	0.9
46.0								0.6			0.5	0.6

\* With additional lifting equipment · Mit Zusatzhubausrüstung · Avec équipement de levage supplémentaire  
 Con equipamiento de elevación adicional · Con attrezzaggio di sollevamento supplementare · С дополнительным подъемным оборудованием



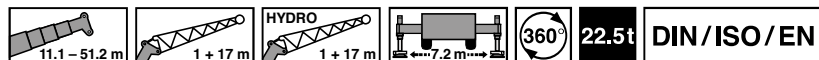
m	11.1 m + 1.0 m + 9.0 m			33.2 m + 1.0 m + 9.0 m			47.9 m + 1.0 m + 9.0 m			51.2 m + 1.0 m + 9.0 m		
	0°	20°	40°	0°	20°	40°	0°	20°	40°	0°	20°	40°
3.0	12.2*											
3.5	12.2*											
4.0	12.2*											
4.5	12.2*											
5.0	12.2*	12.2*										
6.0	12.2*	11.5*										
7.0	12.2*	10.8		10.1								
8.0	12.2*	10.2	7.4	10.1								
9.0	12.1*	9.7	7.1	10.1								
10.0	11.3*	9.0	6.7	10.1	9.0							
11.0	10.5	8.5	6.4	10.1	8.6		4.9					
12.0	9.6	8.0	6.2	10.1	8.3		4.9			4.4		
14.0	8.1	7.1	5.8	9.3	7.6	6.7	4.9			4.4		
16.0	7.0	6.5		8.5	7.1	6.3	4.9	4.9		4.4	4.4	
18.0				6.9	6.7	6.0	4.9	4.9	4.7	4.4	4.4	
20.0				5.5	6.1	5.7	4.9	4.8	4.5	4.4	4.4	4.2
22.0				4.5	5.0	5.4	4.7	4.6	4.3	4.4	4.3	4.0
24.0				3.6	4.1	4.4	3.8	4.3	4.1	3.7	4.1	3.9
26.0				2.9	3.3	3.6	3.1	3.5	3.9	3.0	3.5	3.7
28.0				2.3	2.7	2.9	2.5	2.9	3.2	2.4	2.8	3.2
30.0				1.8	2.1	2.3	2.0	2.3	2.6	1.9	2.3	2.6
32.0				1.4	1.7	1.8	1.6	1.9	2.1	1.5	1.8	2.1
34.0				1.0	1.2		1.2	1.5	1.7	1.1	1.4	1.6
36.0				0.7	0.9		0.9	1.1	1.3	0.8	1.1	1.3
38.0				0.5	0.6		0.6	0.8	1.0	0.5	0.8	0.9
40.0								0.5	0.7		0.5	0.6



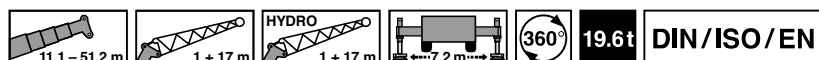
m	11.1 m + 1.0 m + 9.0 m			33.2 m + 1.0 m + 9.0 m			47.9 m + 1.0 m + 9.0 m			51.2 m + 1.0 m + 9.0 m		
	0°	20°	40°	0°	20°	40°	0°	20°	40°	0°	20°	40°
3.0	12.2*											
3.5	12.2*											
4.0	12.2*											
4.5	12.2*											
5.0	12.2*	12.2*										
6.0	12.2*	11.5*										
7.0	12.2*	10.8		10.1								
8.0	12.2*	10.2	7.4	10.1								
9.0	12.1*	9.7	7.1	10.1								
10.0	11.3*	9.0	6.7	10.1	9.0							
11.0	10.5	8.5	6.4	10.1	8.6		4.9					
12.0	9.6	8.0	6.2	10.1	8.3		4.9			4.4		
14.0	8.1	7.1	5.8	8.7	7.6	6.7	4.9			4.4		
16.0	7.0	6.5		6.9	7.1	6.3	4.9	4.9		4.4	4.4	
18.0				5.4	6.1	6.0	4.9	4.9	4.7	4.4	4.4	
20.0				4.2	4.8	5.3	4.3	4.8	4.5	4.1	4.4	4.2
22.0				3.3	3.8	4.2	3.5	4.0	4.3	3.4	3.9	4.0
24.0				2.5	3.0	3.3	2.7	3.2	3.6	2.7	3.2	3.6
26.0				1.9	2.3	2.6	2.1	2.5	2.9	2.0	2.5	2.9
28.0				1.4	1.8	2.0	1.6	2.0	2.3	1.5	1.9	2.3
30.0				1.0	1.3	1.5	1.2	1.5	1.8	1.1	1.5	1.7
32.0				0.6	0.9	1.0	0.8	1.1	1.3	0.7	1.1	1.3
34.0					0.5		0.5	0.7	1.0		0.7	0.9
36.0									0.6			0.6

\* With additional lifting equipment · Mit Zusatzhubausrüstung · Avec équipement de levage supplémentaire  
 Con equipamiento de elevación adicional · Con attrezzaggio di sollevamento supplementare · С дополнительным подъемным оборудованием

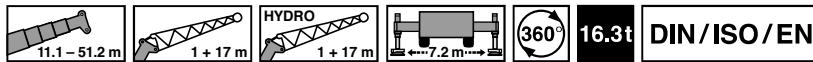
Operation · Einsatz · Utilisation  
 Uso · Эксплуатация



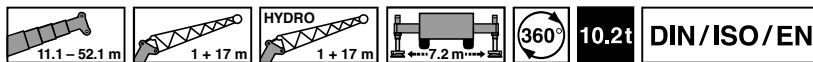
m	11.1 m + 1.0 m + 17.0 m			33.2 m + 1.0 m + 17.0 m			47.9 m + 1.0 m + 17.0 m			51.2 m + 1.0 m + 17.0 m		
	0°	20°	40°	0°	20°	40°	0°	20°	40°	0°	20°	40°
3.5	5.8											
4.0	5.8											
4.5	5.8											
5.0	5.8											
6.0	5.8											
7.0	5.8											
8.0	5.8			4.2								
9.0	5.8			4.2								
10.0	5.8	5.3		4.2								
11.0	5.8	5.0		4.2								
12.0	5.7	4.8		4.2			2.9					
14.0	5.1	4.4		4.2			2.9			2.7		
16.0	4.7	4.1	3.2	4.2	4.2		2.9			2.7		
18.0	4.2	3.7	3.0	4.2	4.1		2.9			2.7		
20.0	3.7	3.4	2.8	4.2	3.9	3.2	2.9	2.9		2.7		
22.0	3.3	3.1	2.6	4.2	3.8	3.1	2.9	2.9		2.7	2.7	
24.0	3.0	2.9	2.5	4.2	3.6	3.0	2.9	2.9		2.7	2.7	
26.0	2.7	2.8		4.2	3.5	2.9	2.9	2.9	2.9	2.7	2.7	2.7
28.0				4.1	3.4	2.8	2.9	2.9	2.8	2.7	2.7	2.6
30.0				3.9	3.3	2.7	2.9	2.9	2.7	2.7	2.7	2.6
32.0				3.8	3.2	2.6	2.9	2.7	2.6	2.7	2.6	2.5
34.0				3.6	3.1	2.6	2.9	2.7	2.5	2.7	2.5	2.4
36.0				3.2	3.0	2.5	2.8	2.6	2.4	2.7	2.4	2.3
38.0				2.8	2.9	2.5	2.6	2.5	2.4	2.6	2.3	2.2
40.0				2.4	2.7	2.5	2.3	2.4	2.3	2.2	2.3	2.2
42.0				2.1	2.3		2.0	2.3	2.2	1.9	2.2	2.1
44.0				1.8	2.0		1.7	2.0	2.2	1.6	2.0	2.1
46.0				1.6	1.7		1.4	1.7	1.9	1.3	1.7	1.9
48.0				1.3			1.2	1.5	1.6	1.1	1.4	1.6
50.0							1.0	1.2	1.4	0.9	1.2	1.3
52.0							0.8	1.0	1.1	0.7	0.9	1.1
54.0							0.6	0.8		0.5	0.7	0.9
56.0								0.6			0.5	



m	11.1 m + 1.0 m + 17.0 m			33.2 m + 1.0 m + 17.0 m			47.9 m + 1.0 m + 17.0 m			51.2 m + 1.0 m + 17.0 m		
	0°	20°	40°	0°	20°	40°	0°	20°	40°	0°	20°	40°
3.5	5.8											
4.0	5.8											
4.5	5.8											
5.0	5.8											
6.0	5.8											
7.0	5.8											
8.0	5.8			4.2								
9.0	5.8			4.2								
10.0	5.8	5.3		4.2								
11.0	5.8	5.0		4.2								
12.0	5.7	4.8		4.2			2.9					
14.0	5.1	4.4		4.2			2.9			2.7		
16.0	4.7	4.1	3.2	4.2	4.2		2.9			2.7		
18.0	4.2	3.7	3.0	4.2	4.1		2.9			2.7		
20.0	3.7	3.4	2.8	4.2	3.9	3.2	2.9	2.9		2.7		
22.0	3.3	3.1	2.6	4.2	3.8	3.1	2.9	2.9		2.7	2.7	
24.0	3.0	2.9	2.5	4.2	3.6	3.0	2.9	2.9		2.7	2.7	
26.0	2.7	2.8		4.2	3.5	2.9	2.9	2.9	2.9	2.7	2.7	2.7
28.0				4.1	3.4	2.8	2.9	2.9	2.8	2.7	2.7	2.6
30.0				3.9	3.3	2.7	2.9	2.9	2.7	2.7	2.7	2.6
32.0				3.6	3.2	2.6	2.9	2.7	2.6	2.7	2.6	2.5
34.0				3.1	3.1	2.6	2.9	2.7	2.5	2.7	2.5	2.4
36.0				2.7	3.0	2.5	2.6	2.6	2.4	2.5	2.4	2.3
38.0				2.3	2.6	2.5	2.2	2.5	2.4	2.1	2.3	2.2
40.0				2.0	2.3	2.5	1.9	2.3	2.3	1.8	2.2	2.2
42.0				1.7	1.9		1.6	1.9	2.2	1.5	1.9	2.1
44.0				1.4	1.6		1.3	1.6	1.9	1.2	1.6	1.8
46.0				1.2	1.3		1.0	1.3	1.6	1.0	1.3	1.5
48.0				1.0			0.8	1.1	1.3	0.7	1.0	1.2
50.0							0.6	0.9	1.0	0.5	0.8	1.0
52.0								0.7	0.8		0.6	0.8
54.0								0.5				0.5

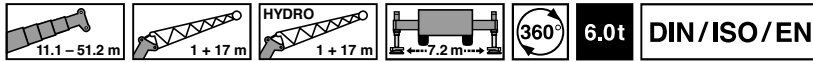


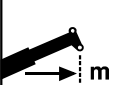
m	11.1 m + 1.0 m + 17.0 m			33.2 m + 1.0 m + 17.0 m			47.9 m + 1.0 m + 17.0 m			51.2 m + 1.0 m + 17.0 m		
	0°	20°	40°	0°	20°	40°	0°	20°	40°	0°	20°	40°
3.5	5.8											
4.0	5.8											
4.5	5.8											
5.0	5.8											
6.0	5.8											
7.0	5.8											
8.0	5.8			4.2								
9.0	5.8			4.2								
10.0	5.8	5.3		4.2								
11.0	5.8	5.0		4.2								
12.0	5.7	4.8		4.2			2.9					
14.0	5.1	4.4		4.2			2.9			2.7		
16.0	4.7	4.1	3.2	4.2	4.2		2.9			2.7		
18.0	4.2	3.7	3.0	4.2	4.1		2.9			2.7		
20.0	3.7	3.4	2.8	4.2	3.9	3.2	2.9	2.9		2.7		
22.0	3.3	3.1	2.6	4.2	3.8	3.1	2.9	2.9		2.7	2.7	
24.0	3.0	2.9	2.5	4.2	3.6	3.0	2.9	2.9		2.7	2.7	
26.0	2.7	2.8		4.2	3.5	2.9	2.9	2.9	2.9	2.7	2.7	2.7
28.0				4.1	3.4	2.8	2.9	2.9	2.8	2.7	2.7	2.6
30.0				3.6	3.3	2.7	2.9	2.9	2.7	2.7	2.7	2.6
32.0				3.1	3.2	2.6	2.9	2.7	2.6	2.7	2.6	2.5
34.0				2.6	3.1	2.6	2.5	2.7	2.5	2.4	2.5	2.4
36.0				2.2	2.6	2.5	2.1	2.6	2.4	2.0	2.4	2.3
38.0				1.9	2.2	2.5	1.8	2.2	2.4	1.7	2.1	2.2
40.0				1.6	1.9	2.0	1.4	1.9	2.2	1.4	1.8	2.1
42.0				1.3	1.5		1.2	1.5	1.8	1.1	1.5	1.8
44.0				1.0	1.2		0.9	1.3	1.5	0.8	1.2	1.5
46.0				0.8	1.0		0.7	1.0	1.2	0.6	0.9	1.2
48.0				0.6			0.5	0.8	0.9		0.7	0.9
50.0								0.5	0.7		0.5	0.7
52.0									0.5			0.5



m	11.1 m + 1.0 m + 17.0 m			33.2 m + 1.0 m + 17.0 m			47.9 m + 1.0 m + 17.0 m			51.2 m + 1.0 m + 17.0 m		
	0°	20°	40°	0°	20°	40°	0°	20°	40°	0°	20°	40°
3.5	5.8											
4.0	5.8											
4.5	5.8											
5.0	5.8											
6.0	5.8											
7.0	5.8											
8.0	5.8			4.2								
9.0	5.8			4.2								
10.0	5.8	5.3		4.2								
11.0	5.8	5.0		4.2								
12.0	5.7	4.8		4.2			2.9					
14.0	5.1	4.4		4.2			2.9			2.7		
16.0	4.7	4.1	3.2	4.2	4.2		2.9			2.7		
18.0	4.2	3.7	3.0	4.2	4.1		2.9			2.7		
20.0	3.7	3.4	2.8	4.2	3.9	3.2	2.9	2.9		2.7		
22.0	3.3	3.1	2.6	4.2	3.8	3.1	2.9	2.9		2.7	2.7	
24.0	3.0	2.9	2.5	4.2	3.6	3.0	2.9	2.9		2.7	2.7	
26.0	2.7	2.8		3.5	3.5	2.9	2.9	2.9	2.9	2.7	2.7	2.7
28.0				2.9	3.4	2.8	2.8	2.9	2.8	2.7	2.7	2.6
30.0				2.4	3.0	2.7	2.3	2.9	2.7	2.2	2.7	2.6
32.0				1.9	2.5	2.6	1.8	2.4	2.6	1.7	2.4	2.5
34.0				1.6	2.0	2.4	1.4	2.0	2.4	1.4	1.9	2.4
36.0				1.2	1.6	1.9	1.1	1.6	2.0	1.0	1.6	2.0
38.0				0.9	1.3	1.5	0.8	1.3	1.6	0.7	1.2	1.6
40.0				0.7	1.0	1.2	0.6	1.0	1.3	0.5	0.9	1.2
42.0				0.5	0.7			0.7	1.0		0.6	0.9
44.0					0.5			0.5	0.7			0.7
46.0									0.5			0.5

Operation · Einsatz · Utilisation  
 Uso · Эксплуатация



 m	11.1 m + 1.0 m + 17.0 m			33.2 m + 1.0 m + 17.0 m			47.9 m + 1.0 m + 17.0 m			51.2 m + 1.0 m + 17.0 m		
	0°	20°	40°	0°	20°	40°	0°	20°	40°	0°	20°	40°
3.5	5.8											
4.0	5.8											
4.5	5.8											
5.0	5.8											
6.0	5.8											
7.0	5.8											
8.0	5.8			4.2								
9.0	5.8			4.2								
10.0	5.8	5.3		4.2								
11.0	5.8	5.0		4.2								
12.0	5.7	4.8		4.2			2.9					
14.0	5.1	4.4		4.2			2.9			2.7		
16.0	4.7	4.1	3.2	4.2	4.2		2.9			2.7		
18.0	4.2	3.7	3.0	4.2	4.1		2.9			2.7		
20.0	3.7	3.4	2.8	4.2	3.9	3.2	2.9	2.9		2.7		
22.0	3.3	3.1	2.6	3.9	3.8	3.1	2.9	2.9		2.7	2.7	
24.0	3.0	2.9	2.5	3.1	3.6	3.0	2.9	2.9		2.7	2.7	
26.0	2.7	2.8		2.5	3.2	2.9	2.4	2.9	2.9	2.3	2.7	2.7
28.0				2.0	2.6	2.8	1.9	2.6	2.8	1.8	2.5	2.6
30.0				1.5	2.1	2.6	1.4	2.1	2.6	1.4	2.0	2.6
32.0				1.2	1.7	2.1	1.1	1.6	2.1	1.0	1.6	2.1
34.0				0.8	1.3	1.6	0.7	1.3	1.7		1.2	1.7
36.0				0.6	1.0	1.2		0.9	1.3		0.9	1.3
38.0					0.6	0.9		0.6	1.0			0.9
40.0						0.6			0.7			0.6